

EVERDIGM ROCKY 4

EVERDIGM Rocky 4 hammer is a general purpose hammer suitable at wide range of air pressures. The hammer has few parts than other hammer allowing an easy maintenance and servicing.

Operation is suitable at air pressure of 87-435 psi (6-30 bar).
Recommended Drilling diameters is 101-127mm (4-5").



FEATURES

UPPER CHAMBER

Optimized cylinder chamber providing maximum hammer stroke and high impact power.

PISTON DESIGN

Lubricate Groove reducing frictional heat and improving reliability.
Robust Simple piston design for strength and performance.

DOWN CHAMBER

Efficient chamber volumes and cycle timing to give optimised performance.

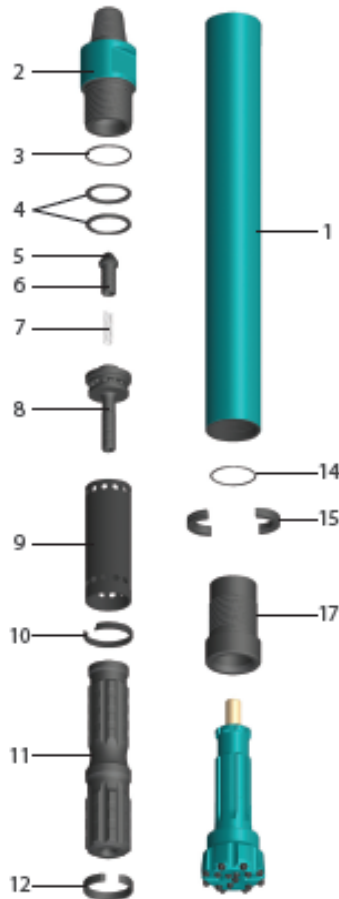
CHUCK

Intermediate frequency induction heating offering extra protection against wear and fatigue.

BIT

Quality forged material providing outstanding performance and durability.

TECHNICAL SPECIFICATION



PARTS LIST

ITEM	DESCRIPTION	PARTS NUMBER		Weight (kg)
		DHD340	M40	
0	SHANK	DHD340	M40	
0	HAMMER SET	RT410-0027	RT410-0190	35.98
1	WEAR SLEEVE	RT410-0028		12.67
2	BACK HEAD	RT410-0029		6.99
3	O-RING	AN NO 243		0.01
4	DISC SPRING	RT410-0030		0.04x2
5	CHECK COVER	RT410-0026		0.01
6	CHECK VALVE	RT410-0018		0.08
7	COIL SPRING	RT410-0183		0.01
8	AIR DISTRIBUTOR	RT410-0031		1.08
9	CYLINDER	RT410-0032		1.53
10	CYLINDER RETAIN RING	RT410-0033		0.08
11	PISTON	RT410-0034	RT410-0191	9.68
12	PISTON RETAIN RING	RT410-0035	RT410-0192	0.12
13	BEARING	RT410-200		0.3
14	O-RING	AN NO 214		0.01
15	BIT RETAIN RING	RT410-0036	RT410-0193	0.3
16	O-RING			
17	CHUCK	RT410-0037	RT410-0194	3.38
[Service Kit] Order code :		EDH04 DHD340 SK	EDH04 M40 SK	

AIR CONSUMPTION

Pressure	CFM (m ³ /min)
100psi / 6.9bar	159 (4.5)
150psi / 10.35bar	216 (6.1)
200psi / 13.8bar	303 (8.6)
250psi / 17.2bar	407 (11.5)
300psi / 20.6 bar	507 (14.4)
350psi / 24 bar	651 (18.5)
400psi / 27.5 bar	690 (19.6)
450psi / 31 bar	790 (22.1)

GENERAL SPECIFICATION

Shank	DHD340, M40	
Backhead Thread	2 3/8 A.P.I. 5N PIN	
Outside Diameter	98mm	3.85"
Length	1010mm	39.76"
Piston Weight	9.68 kg	21.34 lb
Total Weight Approx	35.98 kg	79.32 lb
Working Pressure	67-435 psi	6-30 bar
Bit Size	101-127mm	4-5"

BITS

DIAMETER		FLUSHING HOLE NO.		BUTTONS				Design	PARTS NO.	PRODUCT CODE
mm	in	Front	Gauge	Concave No. x Size	Front No. x Size	Gauge No. x Size	Side No. x Size			
DHD340 SHANK										
105	4 1/8"	2	-	3x12	4x12	8x14	-	SPHERICAL	TBA	105DHD340SCC2
105	4 1/8"	2	-	-	7x12	8x14	-	SPHERICAL	TBA	105DHD340SFF2
115	4 1/2"	2	-	3x12	4x12	8x14	-	SPHERICAL	TBA	115DHD340SCC2
115	4 1/2"	2	-	-	8x12	8x14	-	SPHERICAL	TBA	115DHD340SFF2
M40 SHANK										
105	4 1/8"	2	-	3x12	4x12	8x14	-	SPHERICAL	TBA	105M40SCC2
105	4 1/8"	2	-	-	7x12	8x14	-	SPHERICAL	TBA	105M40SFF2
115	4 1/2"	2	-	3x12	4x12	8x14	-	SPHERICAL	TBA	115M40SCC2
115	4 1/2"	2	-	-	8x12	8x14	-	SPHERICAL	TBA	115M40SFF2