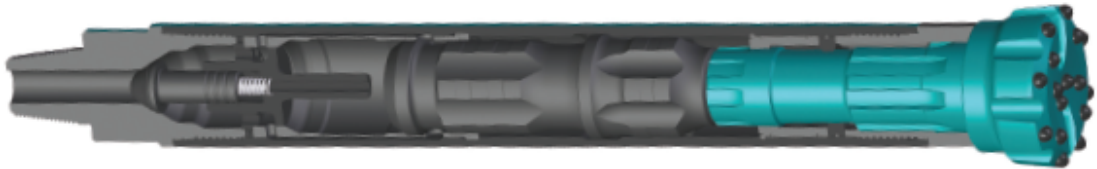


## EVERDIGM ROCKY 6

EVERDIGM Rocky 6 hammer is a general purpose hammer suitable at wide range of air pressures. The hammer has few parts than other hammer allowing an easy maintenance and servicing.

Operation is suitable at air pressure of 87-435 psi (6-30 bar).  
Recommended Drilling diameters is 152-202mm (6-8").



### FEATURES

#### UPPER CHAMBER

Optimized cylinder chamber providing maximum hammer stroke and high impact power.

#### PISTON DESIGN

Lubricate Groove reducing frictional heat and improving reliability.  
Robust Simple piston design for strength and performance.

#### DOWN CHAMBER

Efficient chamber volumes and cycle timing to give optimised performance.

#### CHUCK

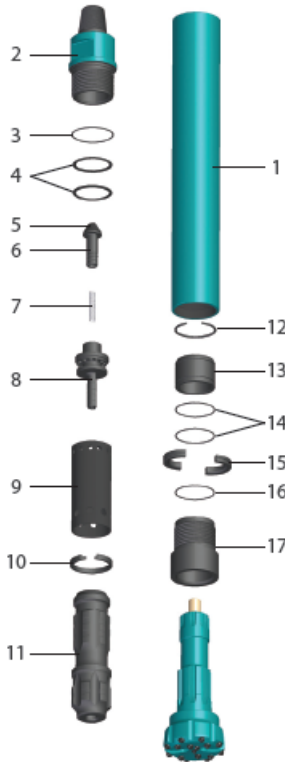
Intermediate frequency induction heating offering extra protection against wear and fatigue.

#### BIT

Quality forged material providing outstanding performance and durability.

## TECHNICAL SPECIFICATION

### PARTS LIST



ITEM	DESCRIPTION	PARTS NUMBER			Weight (kg)
		DHD 360	QL 60	M 60	
0	HAMMER SET	RT410-0052	RT410-0064	RT410-0069	81.13
1	WEAR SLEEVE		RT410-0053		28.38
2	BACK-HEAD		RT410-0054		13.26
3	O-RING		AN NO 263		0.01
4	DISC SPRING		RT410-0055		0.08x2
5	CHECK COVER		RT410-0051		0.2
6	CHECK VALVE		RT410-0042		0.3
7	COIL SPRING		RT410-0184		0.2
8	AIR DISTRIBUTOR		RT410-0056		2.48
9	CYLINDER		RT410-0057		3.2
10	CYLINDER RETAIN RING		RT410-0058		0.23
11	PISTON	RT410-0059	RT410-0065		22.18
12	PISTON RETAIN RING		RT410-0063		0.07
13	BEARING	RT410-0060	RT410-0066	RT410-0070	5.17
14	O-RING		AN NO 244		0.01
15	BIT RETAIN RING	RT410-0061	RT410-0067	RT410-0071	1
16	O-RING		AN NO 244		0.01
17	CHUCK	RT410-0062	RT410-0068	RT410-0072	5.17
[ Service Kit ] Order code :		EDH06 DHD360 SK	EDH06 QL60 SK	EDH06 M60 SK	

### AIR CONSUMPTION

Pressure	CFM (m³/min)
100psi / 6.9bar	262 (7.4)
150psi / 10.35bar	367 (10.4)
200psi / 13.8bar	526 (14.9)
250psi / 17.2bar	687 (19.5)
300psi / 20.6 bar	860 (24.4)
350psi / 24 bar	982 (27.8)
400psi / 27.5 bar	1125 (31.9)
450psi / 31 bar	1350 (38.3)

### GENERAL SPECIFICATION

Shank	DHD360, QL60, M60	
Backhead Thread	3 1/2 A.PI. 5N PIN	
Outside Diameter	139mm	5.47"
Length	1193mm	46.96"
Piston Weight	22.18 kg	48.9 lb
Total Weight Approx	81.13 kg	178.86 lb
Working Pressure	87-435 psi	6-30 bar
Bit Size	152-202"	

\*QL60 foot valveless type available.

### BITS

DIAMETER		FLUSHING HOLE NO.		BUTTONS					PARTS NO.	PRODUCT CODE
mm	in	Front	Gauge	Concave No. x Size	Front No. x Size	Gauge No. x Size	Side No. x Size	Design		
<b>DHD360 SHANK</b>										
152	6"	3	-	3X16	3X16	9X16	-	SPHERICAL	TBA	152DHD360SCC3
164	6 1/2"	3	-	3X16	3X16	9X19	-	SPHERICAL	TBA	164DHD360SCC3
178	7"	3	-	4X16	3X16	9X19	-	SPHERICAL	TBA	178DHD360SCC3
183	7 1/4"	3	-	3X16	6X16	9X19	-	SPHERICAL	TBA	183DHD360SCC3
191	7 1/2"	3	-	3X16	6X16	9X19	-	SPHERICAL	TBA	191DHD360SCC3
194	7 5/8"	3	-	4X16	6X16	9X19	-	SPHERICAL	TBA	194DHD360SCC3
<b>QL60 SHANK</b>										
152	6"	3	-	3X16	3X16	9X16	-	SPHERICAL	TBA	152QL60SCC3
164	6 1/2"	3	-	3X16	3X16	9X19	-	SPHERICAL	TBA	164QL60SCC3
171	6 3/4"	3	-	-	6X16	9X18	-	SPHERICAL	TBA	171QL60SCC3
178	7"	3	-	4X16	3X16	9X19	-	SPHERICAL	TBA	178QL60SCC3
183	7 1/4"	3	-	3X16	6X16	9X19	-	SPHERICAL	TBA	183QL60SCC3
191	7 1/2"	3	-	3X16	6X16	9X19	-	SPHERICAL	TBA	191QL60SCC3
194	7 5/8"	3	-	4X16	6X16	9X19	-	SPHERICAL	TBA	194QL60SCC3
<b>SD6 SHANK</b>										
152	6"	3	-	3X16	3X16	9X16	-	SPHERICAL	TBA	152SD6SCC3
164	6 1/2"	3	-	3X16	3X16	9X19	-	SPHERICAL	TBA	164SD6SCC3
178	7"	3	-	4X16	3X16	9X19	-	SPHERICAL	TBA	178SD6SCC3
184	7 1/4"	3	-	4x16	6x16	9x19	-	SPHERICAL	TBA	184SD6SCC3
189	7 1/2"	3	-	4x16	9x16	9x19	-	SPHERICAL	TBA	189SD6SCC3